

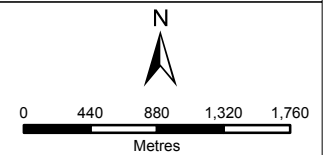
**ESKOM**  
TOPOGRAPHY AND LANDUSE

**Legend**

- FGD System
- Offtake Point
- Eskom Water Reservoirs
- Medupi Power Station
- Make-up Water Supply
- Raw Water Pipeline

**Land Use**

- Cultivated Land
- Mining
- Residential Area
- Vacant /Unspecified



**DISCLAIMER**

The information on this figure was derived from various digital databases available to WSP Environmental (Pty) Ltd. All information is provided "as is" and it must be acknowledged that data, information, and maps are dynamic, and in a constant state of maintenance, correction and update. WSP Environmental (Pty) Ltd cannot accept any responsibility for errors, omissions, or positional accuracy where it has not been directly responsible for the production of the data referenced. There are no warranties, expressed or implied, as to the use of this information, including the warranty of merchantability or fitness for a particular purpose. Notification of any errors will be appreciated.



**WSP ENVIRONMENTAL (PTY) LTD**  
BUILDING C, KNIGHTSBRIDGE,  
33 SLOANE STREET, BRYANSTON  
P.O. BOX 9885, SLOANE PARK 2152, RSA  
Tel +27 (0)11 361 1380, Fax +27 (0)11 361 1381, wsp@wspgroup.co.za

**DATA SOURCE:**

GARMIN STREETS

PROJECTION: GCS\_WGS\_1984

**PROJECT TITLE:**

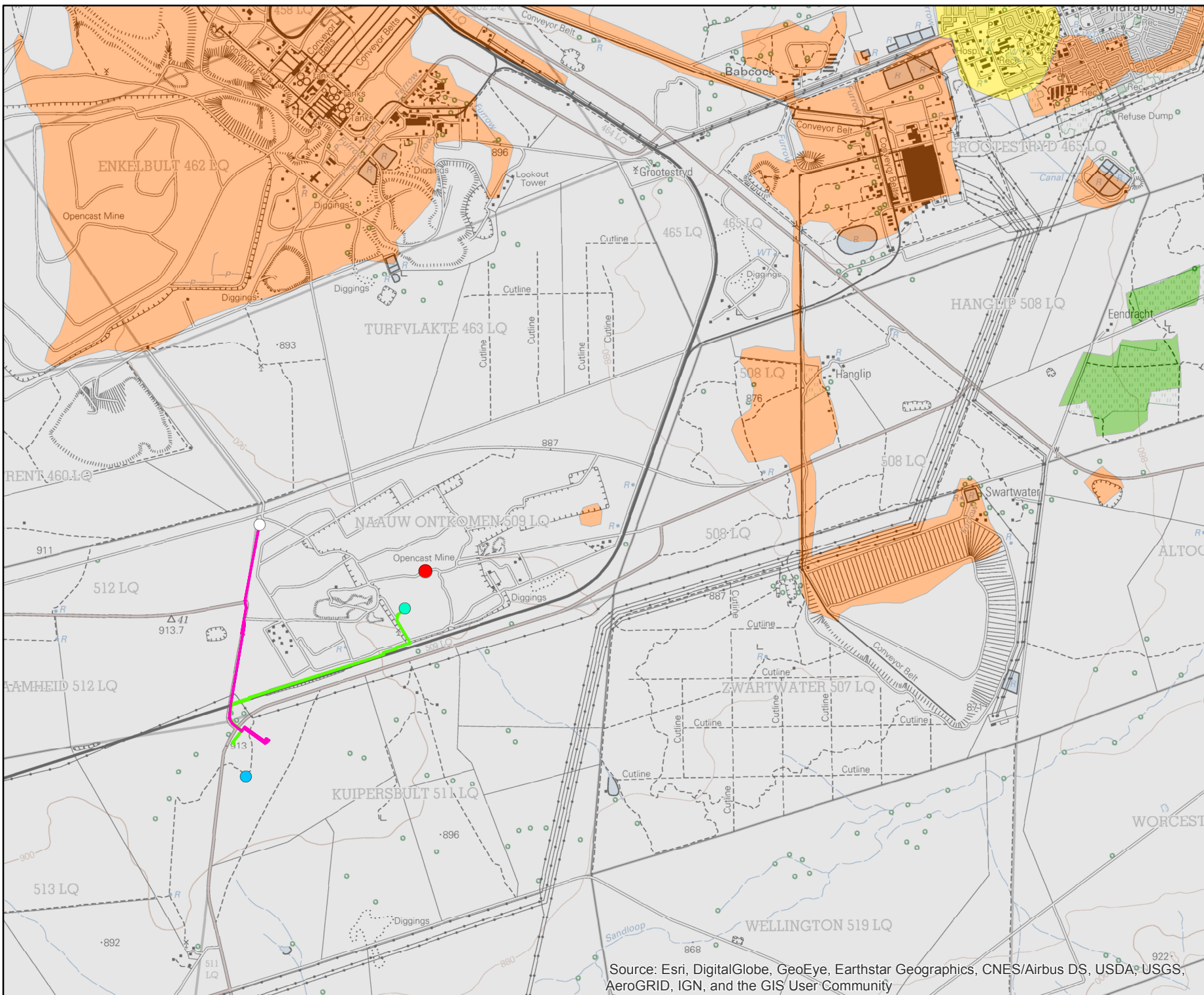
ESKOM RAW WATER PIPELINE BA & WULA

SCALE: 1:50,000 DRAWN BY: SINENHLANHLA RADEBE

DATE: 2019/04/24 REVIEWED BY: TUTAYI CHIFADZA

FIGURE NO: 5 PROJECT NO: 41101556 REV:

© COPYRIGHT RESERVED  
The content of this document is privileged and confidential and may not be disclosed or reproduced without the express authorisation of the author, being "WSP Environmental (Pty) Ltd"



Source: Esri, DigitalGlobe, GeoEye, Earthstar Geographics, CNES/Airbus DS, USDA, USGS, AeroGRID, IGN, and the GIS User Community